



The Waitākere Ranges Protection Society Inc. is a registered charitable entity in terms of the Charities Act 2005. Registration No. CC46103

7a Shipton Place, Blockhouse Bay, Akl 0600

Email: wrps@waitakereranges.org.nz

Website: www.waitakereranges.org.nz



facebook.com/TheWRPS

ANNUAL GENERAL MEETING

The Annual General Meeting of the Society will be held at 6 pm, Wednesday 10 May 2023 West Lynn Garden, 73 Parker Avenue, New Lynn



The Society's Annual Report and a summary of the Audited Financial/Performance Reports will as usual be included in the next newsletter and posted on the WRPS website. *Members may request copies by phoning 021 048 7689 or emailing wrps@waitakereranges.org.nz*

At 7pm, the meeting will be followed by a talk by Dr Bruce W Hayward, geologist and marine ecologist based in Auckland

GEOLOGY OF THE WAITĀKERE RANGES

Synopsis: The Waitākere Ranges are the eroded eastern remnants of New Zealand's largest stratovolcano, that erupted between 20 and 15 million years ago. Waitākere Volcano erupted in deep water beneath the sea and built a huge submarine edifice capped by volcanic islands. Since eruptions stopped, the volcano has been uplifted out of the sea and eroded down to a flat coastal plain by storms on land and along the coast. More recently this plain was uplifted and tilted west by a series of earthquakes with reactivated erosion inland and along the coast producing the Waitākere Ranges of today. Increased supply of sand to the west coast by volcanoes in Taranaki and the central North Island over the last million years has created the Awhitu sand dune barrier

enclosing the Manukau Harbour and in just the last 8000 yrs has filled up the coastal to create the modern west coast beaches. Our beloved Waitākere Ranges were built and moulded by numerous short-lived natural events such as eruptions, earthquakes and storms.

The talk will be followed by **supper**.

As usual, there will be a '**trading table**', selling WRPS merchandise (see the final pages of this newsletter for details). Don't forget that we can no longer take cheques. So if you think you may like to purchase an item or two, it is advisable to bring cash. There will be other options for payment available but they won't be quite so straightforward as cash.

WRPS Merchandise

You are invited to scroll down to the end of this newsletter to find details of items of WRPS merchandise for sale. There are tea towels, t-shirts, bird prints, a Don Binney colour print "Kawaupaku, Te Henga 1967", individually crafted and hand painted mugs and bowls by Lynda Harris, and a beautifully illustrated book "Waitākere Ranges – Nature, History, Culture", and more.

President's Report

Kia ora tatou koutou

Hope you are all well and enjoying the Autumn.

The Weather and the Ranges

Who would have thought that since our last newsletter Auckland would have experienced its wettest summer on

record with two destructive weather events back-to-back, the Anniversary Weekend Deluge and of course, Cyclone Gabrielle.

The Waitākere Ranges have always been at risk of flooding, sea erosion and slipping but these recent weather events have been devastating to the Ranges. Damage to Karekare, Muriwai and Piha has been well documented in the media, but there is also extensive damage elsewhere mainly due to the slips, especially along the western coastline of the Ranges. Assessment will need to be undertaken, no mean feat in itself, before the damage can be addressed, which is going to take some considerable time, maybe years.

The Society extends its sincere sympathy to all of those whose lives have been disrupted and destroyed by these events.

The Tracks in the Ranges

Damage to the tracks appears to range from minor to irreparable. Piha, Karekare, Muriwai and the Te Henga walkway will be closed for some time. Information on park and facility closures can be found on the Auckland Council Website

<https://www.aucklandcouncil.govt.nz/Pages/emergency-facility-closures.aspx>.

In the Courts

There has been slow progress over the past five months on some of the matters that the Society is working on. For instance, the Watercare Huia Water Treatment Plant Hearing has been delayed until the end of June. In February the Select Committee held their hearings on the Natural and Built Environment Bill and the Spatial Planning Bill. I attended the Hearing along with Douglas Allen, WRPS's Legal Counsel, who presented our submission. Many thanks to Douglas for his valuable work for the Society.

The EDS Conference

In March, Sandra Jones (Treasurer and Deputy President) and I attended the Environment Defence Society's conference 'Pivot Point' held in Auckland at the Millennium Hotel. The conference was called 'Pivot Point' to reflect the hope that Aotearoa New Zealand is entering a period of deep change.

The conference brought together a diverse group of experts and stakeholders, including scientists, academics, policymakers, and community leaders.

It was three days of informed commentary on key sectors facing this transition of our economy from one based on resource exploitation to one which drives environmental restoration including the possibility of rewilding Aotearoa New Zealand alongside increased well-being. Various issues were discussed, including climate change, biodiversity loss, marine protection, and sustainable land use and the major legislation about to replace the RMA. There was a particular focus on the role of law and policy in driving positive environmental change and the need for collaborative, multi-disciplinary approaches to address complex environmental problems.

The conference also highlighted the importance of engaging with Māori and incorporating Māori knowledge and perspectives into environmental decision-making processes and conservation initiatives and the vital role that Māori play in protecting the environment.

Overall, the conference provided a platform for meaningful discussions and highlighted the importance of collective action in addressing the complex environmental challenges we face and to assess the adequacy and workability of all the changes as well as looking forward to what the next term of government might bring.

EDS's conferences always provide thoughtful leadership on environmental matters and this one did not disappoint.

EDS's next conference is Climate Change and Business Conference 19-20 September 2023, Auckland. Details available on their website.

The WRPS AGM

Finally, I would like to remind all members that our annual general meeting is coming up on 10th May. This is an important opportunity to have your say in the future direction of the society, and to elect new committee members. We are delighted to announce that Dr Bruce Hayward, (<http://www.geomarine.org.nz/>) has agreed to be our Guest Speaker. Please join us to hear Bruce's talk on the Geology of the Waitākere Ranges.

Please note that Bruce will not be able to answer specific questions about actual slips and flooding that no one, at this early stage, has answers to as it is too soon after the weather events, given that access to the coastal areas is still closed off, to be able to form a view of what has happened in each of the areas and why.

Thank you all for your ongoing support of the Waitākere Ranges Protection Society. Together, we can continue to

make a difference in preserving this unique and beautiful environment.

What to do if your land has a slip

with some helpful suggestions about how to protect against slips in the future



By Greg Presland 19.02.2023
(reproduced with permission)

I went to Paturua yesterday morning on a quiet and still day and took this photo.

It was serene, but the cliffs bore the scars of some significant slips, parts of the foreshore was washed away and there is still a car deposited on the edge of the cliff [centre right in the photo] as a reminder of the fury of the previous storm.

These are some personal suggestions if you have a slip on your property.

The first thing to do is report it. Council is a complex entity. There can be multiple references to an individual event but without a reference number you will not be able to adequately converse with the entity in the future. The second thing to do is work out is the location of the slip. There are generally three possibilities:

1. It is on your land.
2. It is on road reserve.
3. It is on Council reserve.

You can check out Auckland Council's [Geomaps](#) and turn on Aerial Basemap to give you a reasonably good aerial view showing the location of your property's boundary.

The response will be somewhat complex. If it is on your land and potentially affects the road then Auckland Transport have indicated they will talk to you. No promises but if work is required to maintain the road then I suspect they will be willing to discuss proposals.

You should talk to your insurance company and lodge a claim if you have not already done so. You should also make sure that [a claim with EQC](#) has been made.

Often your insurance company will take care of this. Please EQC does not cover all damage to land.

And looking forward to the future there are a few things I believe have to happen.

1. It is clear to me that a number of the slips happened on weed infected sites. Property by property we need to deal to weeds and replace them with more deep rooted native plants.
2. Council has a role to play in this. The local board spends a reasonably significant amount of money on supporting communities deal with weeds. This sum has to increase dramatically and we need to do what we can to assist.
3. We need to protect trees. They hold banks together and soak up water and slow down water flows. We cut them at our peril.
4. Stormwater infrastructure needs to be reviewed and improved. And Council needs to be more nimble. At the first sign of a large storm there needs to be the ability to inspect and clear all drains.
5. Perhaps most importantly local communities need to be supported and nurtured. I encountered many instances where locals grouped together and supported each other.

FROM THE ARCHIVES

An addition to Spragg Bush 2004

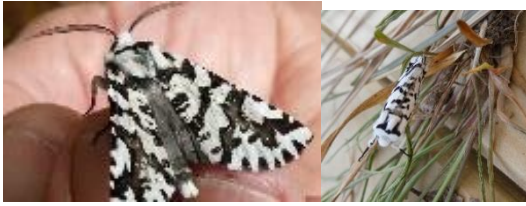


Ross and Jessica Beever and their family

In 2001 the possibility of adding 71 Turanga Road, an area of dense bush adjacent to Spragg Bush, to the parkland became available. This addition was achieved with the help and enthusiasm of Jessica Beever (nee Spragg) and the many who contributed to the purchase fund set up by WRPS. The property was purchased in 2003 and the Society gifted it to the Park in November 2004. A list of over 80 donors and sponsors was printed in the November 2004 newsletter. The WCC sponsored the purchase with a donation of \$25,000 and an interest free loan to the Society of a further \$17,000. This loan was repaid by the Society in May 2005. Another section in Tauranga Road was also available for purchase, but the Society could not raise enough money to buy it. The cost of land for building on in the Waitākere Ranges was becoming very high at this stage; it was a desirable place to live as services became closer and this made the purchase of land to add to the Park a difficult proposition, as is the case presently.

Extract from "Saving the Ranges" T & B Harvey 2013

Lichen moth (aka Zebra moth)

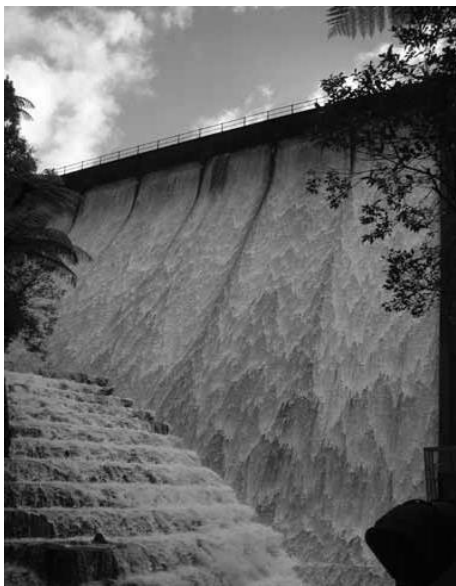


Images: Sandra Jones

We received a report of a lichen moth in the Swanson foothills in October 2020. We would be interested to know if members have seen it elsewhere around the Ranges.

It is the *Declana atronivea* (North Island lichen moth), also known as 'zebra moth'. It is apparently found only in the North Island and is usually seen November to February. It is a patterned moth and hence blends in with lichen on tree trunks when resting. Its 'looper' caterpillar (20–30mm) feed on *Pseudopanax* (fivefinger) and lichen. The caterpillar has two camouflage strategies, one to look like a dead twig and other is to curl up and look like a bird dropping.

FROM THE ARCHIVES: The dams issue, 2003–2009



Upper Huia Dam spill

Permanent water flows below the dams were needed to ensure that the living animals in the streams could maintain their breeding cycles. Many freshwater fish species needed to go downstream to the harbour to reproduce, and other saltwater species needed to be able to go upstream to reproduce. These life cycles are explained fully in the article about life in the streams in *Waitākere Ranges* (M. Joy, 'Fish in the fresh water', p. 166). In addition, plants and reptiles were also affected if drought conditions persisted below the dams. When the resource consents were due for renewal, WRPS took the matter to the Environment Court to ensure permanent water flows were a consent condition in the

renewal requirements. This was quite an expensive exercise for WSL [Watercare Services Ltd], as the dams had not been designed to allow for permanent water flows, but WSL worked during the following few years to progressively fulfil these requirements in all the Waitākere dams. The first dam at which this requirement was completed was Waitākere in 2009, followed by Nihotupu, and Huia in 2011.

Extract from "Saving the Ranges" T & B Harvey 2013

Subscription: Renewal Reminder

Subscription renewal notices for the period 1 February 2023 to 31 January 2024 were sent to all members recently. If you haven't renewed your subscription yet, could we urge you to do so as soon as possible. If you aren't sure, feel free to email me or phone me to check. I'd rather you did this than pay twice.

Sandra Jones, Treasurer Tel: 021 027 73067

Email: treasurer@waitakereranges.org.nz

WRPS Merchandise

We have a range of quality merchandise available for purchase. For more details of the Society's merchandise refer to the WRPS online shop at:

www.waitakereranges.org.nz

Thank you for your support.

T-Shirts \$40 each



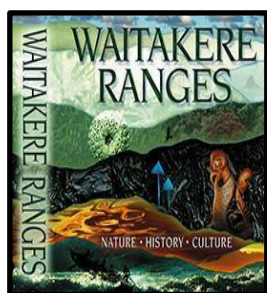
All T-shirts are 100% cotton except the grey marle which is 85% cotton/15% polyester. Available in a variety of colours (black, white, army green, grey), sizes and cuts for men and women. Please refer to our website for more details.

Mugs & Bowls \$40 each



Individually crafted and hand painted by Lynda Harris
Mugs, L to R: Tūī, kōkako, kiwi, kerurū, kākāriki, kākā, tōrea pango (not pictured)

Book: *Waitākere Ranges: Nature, History, Culture*



Ed. B. & T. Harvey. 541 pages, generously illustrated.
 Special for WRPS members: **\$85 (includes p&p)**
 For non-WRPS members: **\$95 (includes p&p)**

Tea Towels \$20 each



Place names of the Ranges



Māori Proverb

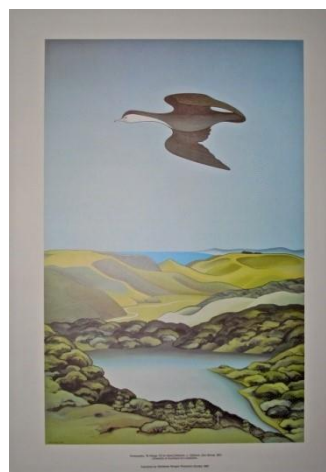
Made from unbleached 100% Indian cotton, designed in West Auckland by Julia Moore and screen printed by Karousel. The quotation is a traditional proverb from Te Kawerau ā Maki and we are grateful to Te Wārena Taua for permission to use it.

Art Prints \$45 each

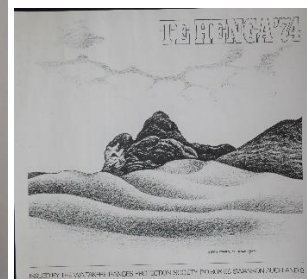


Three unique Prints (unframed). Limited run printed on quality paper. Tui and Heron (size A3). Tomtit (size A4)
 Artwork by Mandy Patmore www.mandypatmore.com
www.facebook.com/mandypatmore.artist

Posters



Kawaupaku, Te Henga 1967
 Don Binney, colour
 63cm x 44cm \$30

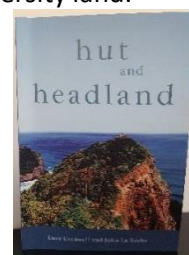


Te Henga, '74
 Don Binney, b/w
 46cm x 58cm \$20



Karekare 1982
 Glenda Randerson, b/w
 29cm x 42 cm \$20

Book *Hut and Headland* – the history of the field hut built by University of Auckland students at Anawhata on University land. \$15



Order / Payment

[Book]: Kiwibank Acc No. 38-9010-0379887-02

[Other items]: Kiwibank Acc No. 38-9010-0379887-01

Paying by direct credit: After making your payment online, email your order information to treasurer@waitakereranges.org.nz

Paying by telephone banking or other means: Phone the Treasurer (021 027 73067) to confirm your order details.

YOUR COMMITTEE

| | | |
|---------------------------|------------------|---|
| President: | Anna Fomison | president@waitakereranges.org.nz Ph: 021 163 7492 |
| Deputy President: | Sandra Jones | jsandra378@gmail.com Ph: 021 027 73067 |
| Secretary: | Keziah Singleton | keziah@flemingsingletonlaw.co.nz Ph: 021 048 7689 |
| Treasurer: | Sandra Jones | treasurer@waitakereranges.org.nz Ph: 021 027 73067 |
| Committee members: | Heather Tanguay | heathertanguay@slingshot.co.nz |
| | Tim O'Shea | tim.oshea@outlook.co.nz |
| | Rob Taylor | rob@taylored.co.nz |
| | Susie Vincent | susannevincent@outlook.com |

Committee meetings are held monthly, from February to November, normally on the second Wed. of the month.